

GRJ Conduit Outlet Boxes

Explosionproof, Dust-Ignitionproof, Raintight

UNILETS™ for use with Threaded Metal Conduit. Furnished with Internal Ground Screw.

NEC/CEC:

Class I, Division 1 and 2, Groups C, D
Class II, Division 1 and 2, Groups E, F, G
Class III

Applications

- Complies with a wide range of classified area requirements.
- Corrosion-resistant: ideal indoors or out.
- For pulling of wires.
- Connect conduit lengths and change direction of conduit runs.
- Provide access for maintenance.

Features

- Malleable iron bodies have high tensile strength and ductility. Provides great resistance to corrosion, impact, and shock.
- Accurately tapped, tapered hub threads for tight, rigid joints and ground continuity.
- Furnished with covers.
- General purpose wiring.
- Small, round conduit outlet boxes.
- Externally threaded body with internally threaded cover.
- Smooth, rounded integral bushing in each hub type box protects conductor insulation.

Standard Materials

- Bodies and covers: malleable iron

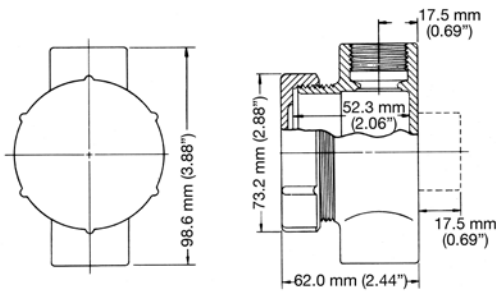
Standard Finishes









- Bodies and covers: triple-coat — (1) zinc electroplate, (2) chromate, and (3) epoxy powder coat

NEC/CEC Certifications and Compliances

- UL Standard: UL 886 (UL 1203)
- UL Listed: E85310
- CSA Standard: C22.2 No. 25, C22.2 No. 30
- CSA Certified: 025875

Dimensions in Millimeters (Inches)



Box Type	Conduit Size (Inches)	Cover Opening mm (in)	Capacity dm ³ (in ³)	Catalog Number
GRJ Box with Cover				
 GRJC	1/2	54.1 (2.13)	0.12 (7.3)	GRJC50
	3/4	54.1 (2.13)	0.12 (7.3)	GRJC75
 GRJCA	1/2	54.1 (2.13)	0.12 (7.3)	GRJCA50
	3/4	54.1 (2.13)	0.12 (7.3)	GRJCA75
 GRJEA	1/2	54.1 (2.13)	0.12 (7.3)	GRJEA50
	3/4	54.1 (2.13)	0.12 (7.3)	GRJEA75
 GRJL	1/2	54.1 (2.13)	0.12 (7.3)	GRJL50
	3/4	54.1 (2.13)	0.12 (7.3)	GRJL75
 GRJT	1/2	54.1 (2.13)	0.12 (7.3)	GRJT50
	3/4	54.1 (2.13)	0.12 (7.3)	GRJT75
 GRJTA	1/2	54.1 (2.13)	0.12 (7.3)	GRJTA50
	3/4	54.1 (2.13)	0.12 (7.3)	GRJTA75
 GRJX	1/2	54.1 (2.13)	0.12 (7.3)	GRJX50
	3/4	54.1 (2.13)	0.12 (7.3)	GRJX75
 GRJ Surface Covers		54.1 (2.13)		GRJK-S

ENCLOSURES AND JUNCTION BOXES: NEC/CEC EXPLOSIONPROOF OUTLET BOXES

